

SLOPE INTERCEPT FORM

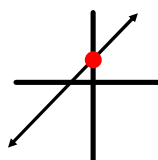
$$Y = MX + B$$

Slope

Graph 2 pts Table

y-int

Graph Table



STANDARD FORM

Any line can be written in this form....

$$Ax + By = C$$

where the following conditions hold

1. There are **NO FRACTIONS** or **DECIMALS**
2. The **coefficient** of **A** must be **POSITIVE**

INTERCEPTS

	TABLE	GRAPH	SOLVE
X-INT	$\begin{array}{c c} x & y \\ \hline 3 & 0 \end{array}$ $y = 0$		$\text{Set } y = 0$
Y-INT	$\begin{array}{c c} x & y \\ \hline 0 & 3 \end{array}$ $x = 0$		$\text{Set } x = 0$

CALCULATOR TIPS

CTRL - I

Table of Points

GRAPH-RELATION

(No Table)

Graph Anything

GRAPH TRACE

Need to know's

LINEAR MISTAKES

$$y = 2x + 7$$

$$\text{SLOPE} = 7$$

$$\text{Y-INT} = 2$$

$m = -2$
 $b = 7$
 #1: _____
 flipped slope/b

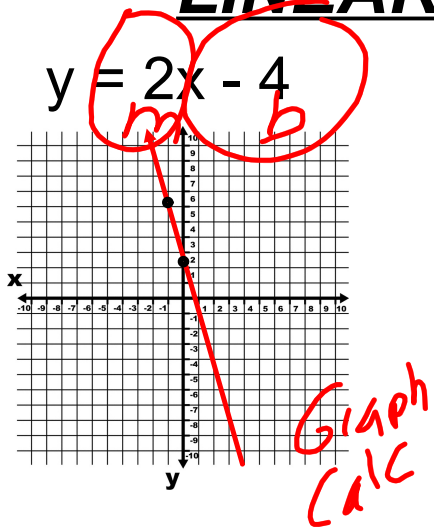
$$2x - 3y = 6$$

$$\begin{array}{r}
 2x \quad -2x \\
 -3y = -2x + 6 \\
 \hline
 \quad = -3 \\
 \hline
 y = \frac{2}{3}x - 2
 \end{array}$$

$$y = 2/3x + 2$$

#2: _____
 math error

LINEAR MISTAKES



#3: Graph
Incorrectly

x	y
0	3
2	2
3	5
4	0

x-int = 3 & y-int = 4

#4: flipped
Intercepts