

QUADRATIC PARENT FUNCTION

EQUATION:

$$f(x) = x^2$$

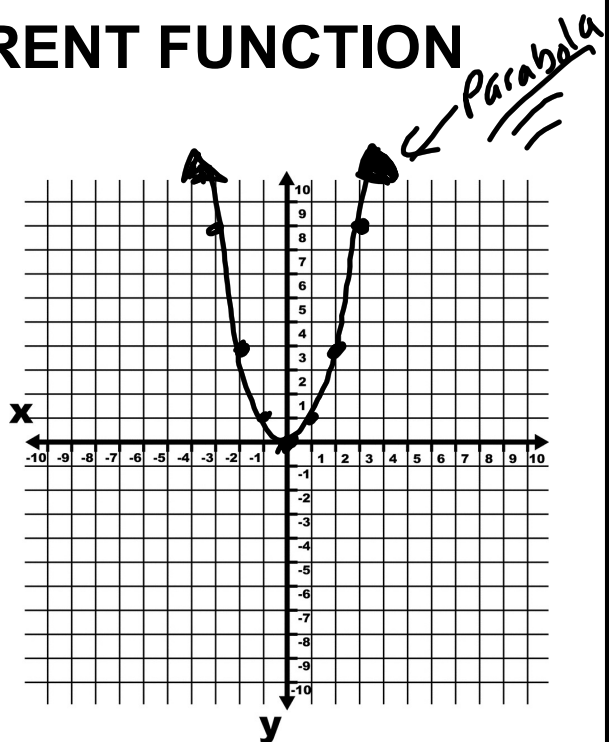
All Real #'s

DOMAIN:

$$\underline{-\infty < x < \infty}$$

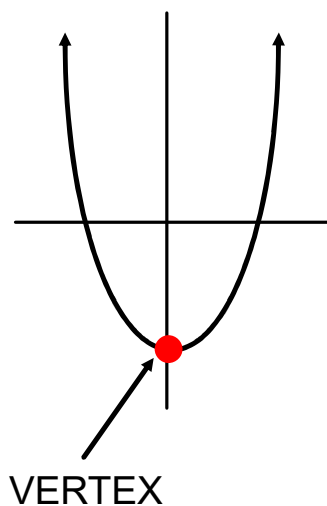
RANGE:

$$\underline{0 \leq y < \infty}$$



VERTEX

VERTEX:

Highest or LowestPoint On Parabola.(Only ONE Vertex)

X-INTERCEPT

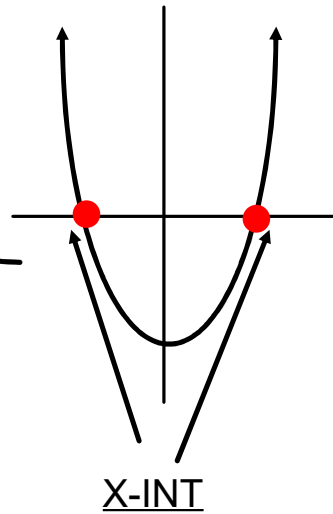
X-INT:

Parabola crosses
x-axis.

ALSO KNOWN AS:

1. Roots
2. Zeros
3. Solution

Crosses
 x_1
 x_2
 x_0



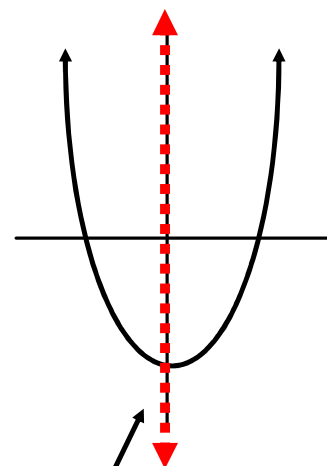
AXIS OF SYMMETRY

AXIS OF SYMMETRY:

Vertical Line that

Splits parabola in
half.

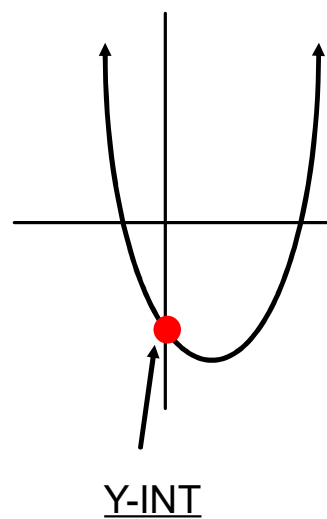
(Equation)
 $x = \#$



AXIS OF SYM

Y-INTERCEPT

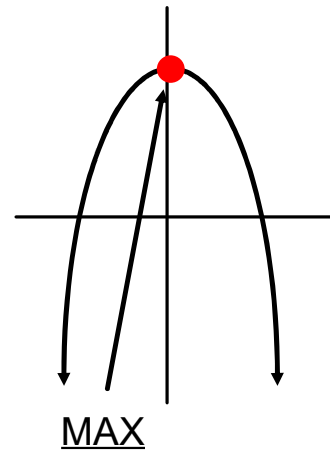
Y-INT:

Parabola crossesy-axis.

MAXIMUM

MAX:

Highest point.



MINIMUM

MIN:

Lowest Point.

