

ALL LINES CAN BE FOUND USING...

pts graph Table

$$y - y_1 = m (x - x_1)$$

POINT SLOPE FORM

ALL YOU NEED IS A...

1. Point (x, y₁)
2. Slope m

YOU MUST BE ABLE TO TURN

$$y - y_1 = m(x - x_1) \longrightarrow y = mx + b$$

+y₁
-y₁

POINT-SLOPE

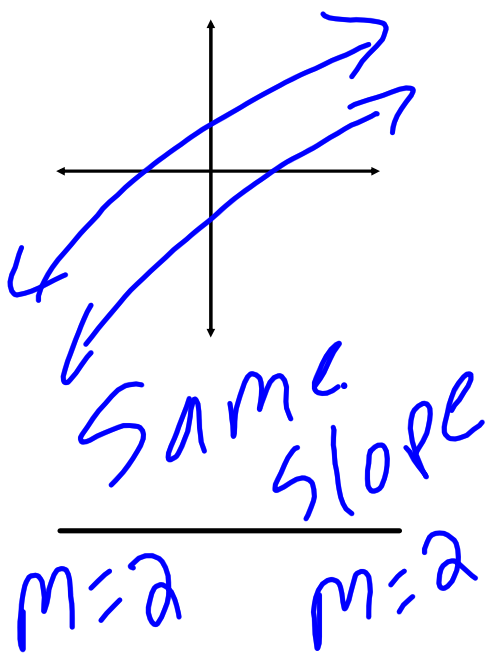
INTO

SLOPE-INTERCEPT

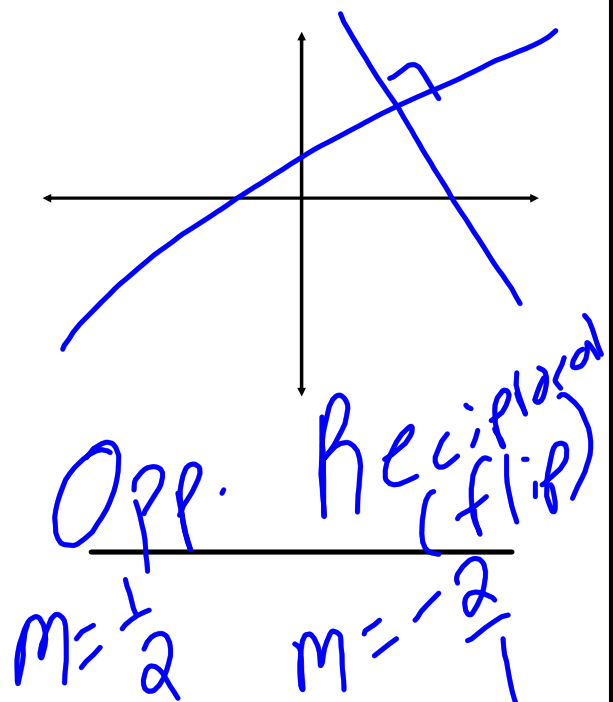
BY GETTING

y by itself

PARALLEL



PERPENDICULAR



MISTAKES

$$y - 2 = 2(x + 7)$$

$$y - 2 = 2x + 14$$

+2 +2

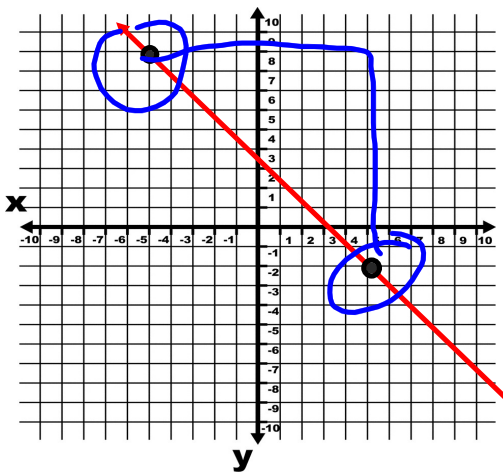
$$y = 2x + 12$$

$$y = 2x + 16$$

#1: _____

math
error (calc.)

LINEAR MISTAKES



$$m = \frac{-11}{10}$$

$$(x_1, y_1) = (5, -2)$$

$$y = \frac{-11}{10}x + 2.4$$

Guess

#2: _____