

GRAPHING INEQUALITIES

	SHADE ABOVE/ BELOW	DASHED/SOLID
\wedge	BELOW	DASHED
\vee	ABOVE	DASHED
\wedge 	BELOW	SOLID
\vee 	ABOVE	SOLID

INEQUALITIES: STANDARD -> SLOPE-INTERCEPT

$$\mathbf{Ax + By < C \quad -> \quad y < mx + b}$$

1. GET "Y" BY ITSELF

2. WATCH OUT FOR NEGATIVES

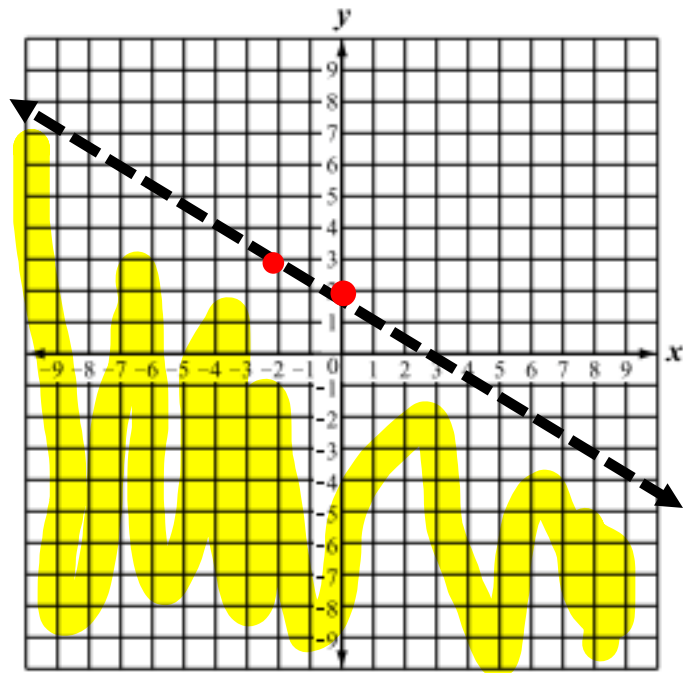
(MUST FLIP SIGN IF DIVIDE BY NEG.)

EXAMPLE:

GRAPH

$$2x + 4y < 8$$

$$Y < -1/2X + 2$$



POINT IN SOLUTION SET: _____(0,0)_____

CALCULATOR TIP

GRAPH

PAGE

(BACKSPACE TO GET INEQUALITIES/RELATION OPTIONS)